



From the Director

The apostle Paul said, *"Beloved I wish above all things that you may prosper and be in good health even as your soul prospers."* I echo Paul's wish. I pray that you prosper, are in good health, and that your soul prospers; I also pray it for our community.

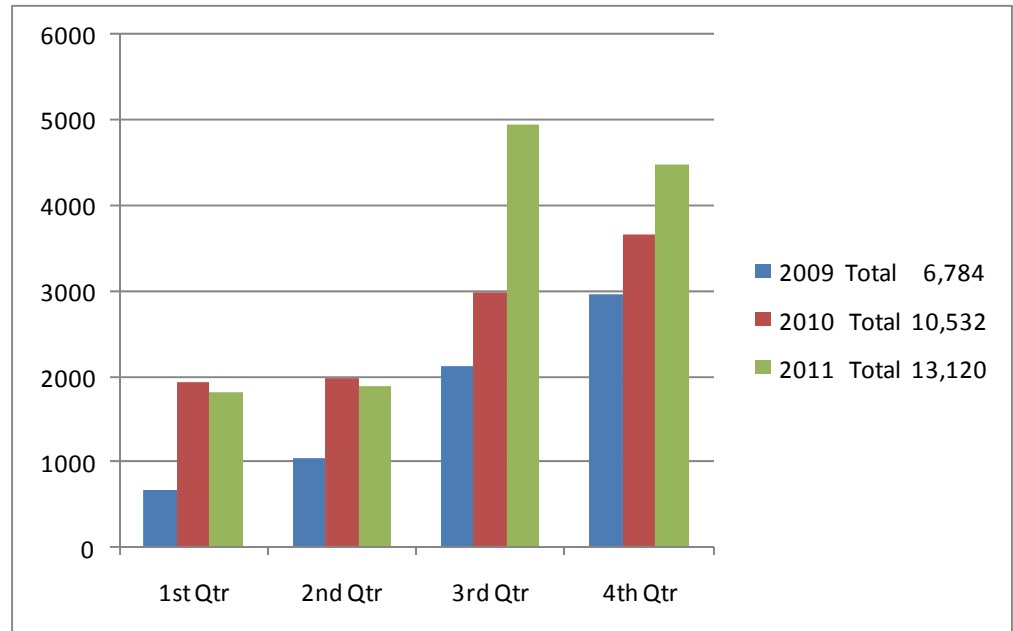
As Christ's followers of today, we are surrounded by need and pain. Everyone desires to prosper, be encouraged, and experience the love of Christ.

During 2011, the love of Christ came *through* people to people in our communities more than 13,000 times. That love came in the form of hand-made mittens and quilts, new pillows; a hug and a prayer; a bed, blender, a broom or boots; home delivered meals; experience fixing a toilet, a cabinet or a light; a ride to a medical appointment; a listening ear; a money management class and personal advisor; a visitor rejoicing when the baby is born and delivering diapers, cribs and handmade blankets. The list is endless.

Love INC-Heartland is You. It's you and our partner churches bringing the love of Christ to others. I thank you and I thank God for your gifts that made 2011 a huge success. All the love, work, dollars, merchandise and time donated showed Christ's love to each other. Thank you for your investment and desire to bring our communities alive with compassion, peace and joy through the Love of Christ. May you prosper this year through the greatest blessings that God can bring you.

Terri Harris

Requests For Help Surpass Previous Records



2011 at a Glance

We look back on a year marked by endless God-filled moments when neighbors' hopelessness came face-to-face with Love INC volunteers' love and prayers.

- 748** Families served
- 13,120** Individual needs met
- 15,790** Volunteer hours
- \$159,202** Income



Love Story:

We share each other's burdens

Each call is an opportunity for Love INC to share God's love with those who feel overwhelmed and need a friend to help carry their load.

One such family contacted Love INC after doing all they knew how to do on their own. The head of household had a terminal illness. The family's energy and resources were depleted. The adult children offered their energy and funds but these were soon gone as well.

Love INC prayed with them and connected the family with agencies that could give financial assistance. Our Furniture Ministry found and delivered furniture to the wheelchair-bound patient. The new, taller kitchen table accommodated the man's wheelchair so he

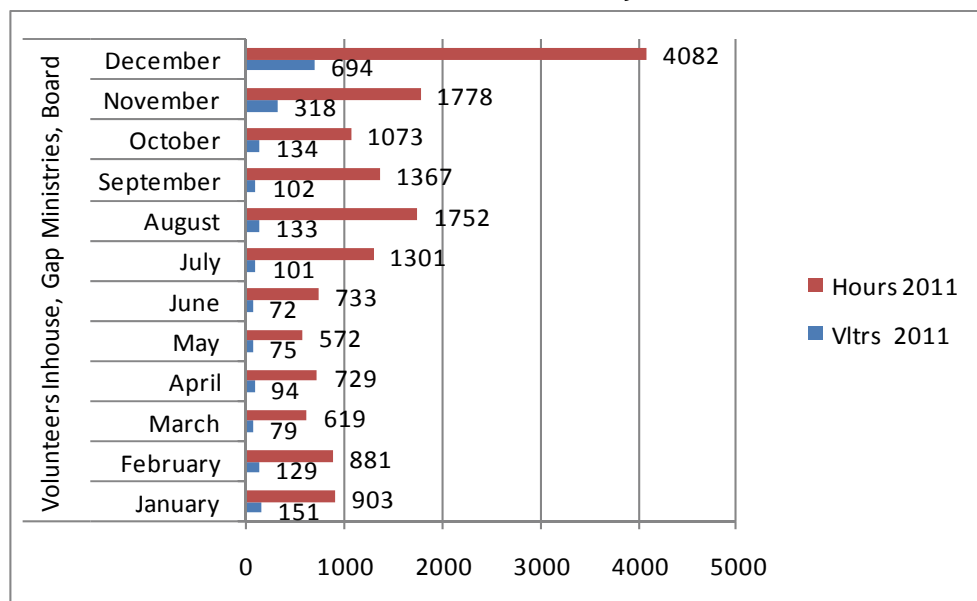
could join the family for meals. A recliner allowed him a change of location and offered much needed rest.

Later came a call from the son saying that his dad was not doing well. They needed appropriate clothing for the funeral. It was gratifying that the Love INC store volunteers found the exact sizes and all they needed, even neckties, for this hard time ahead.

We truly thank God for this opportunity to come alongside these dear people. Our volunteers were blessed by showing the love of Christ. Thanks for all the donations from our generous community members that helped relieve some of their stress during a time of great need.



2011 Volunteer Hours: 15,790



2011 Volunteer services are valued at \$26.38 per hour.

2011 Volunteer hours in dollars = **\$416,540.20**

2011 Board of Directors

Joy Bodin
Connie Botz
Jodi Boylan
Jerry Hirsch
Cindy Irwin
Kim Knutson
Kris Marcus
K.J. McDonald*
Pastor Gale Reitan*
Joleen Soderberg
Barry Todd
Terri Harris, Exec. Director
* Term ends at annual meeting



Love INC-Heartland Staff

Terri Harris,
Executive Director
Reeva Lodermeier,
Administrative Assistant
Sue Weiland,
Clearinghouse Coord.
Lisa Green,
Volunteer Coordinator
Carolyn Knutson,
Daily Volunteer



(from left) Terri Harris, Reeva Lodermeier, Lisa Green, Sue Weiland, Carolyn Knutson

Affiliates sponsor valuable ministries and events

Gap Ministries:

Lullaby Baby Ministry
Furniture Ministry
Housewares Ministry
Bedding and Linen Ministry
Humble Home Repairs
Personal Care Products
Transportation Ministry

Church Ministries:

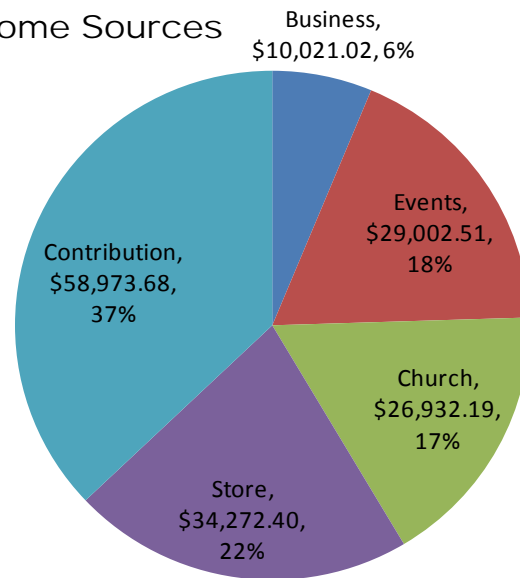
Good Samaritans
Good Neighbor Ministry
Lunch Box Fever
Caritas, Caring Ministry
Food Shelf
Foster Care Kits
Coat Drive
D.E.R.T.

Host Events:

Golf Tournament
Back-to-School Bash
SleepOut Fund Raiser
Toy Store
Adopt-a-Family drop off, pick up
Banquet Fund Raiser



2011 Income Sources



Total Income \$159,202

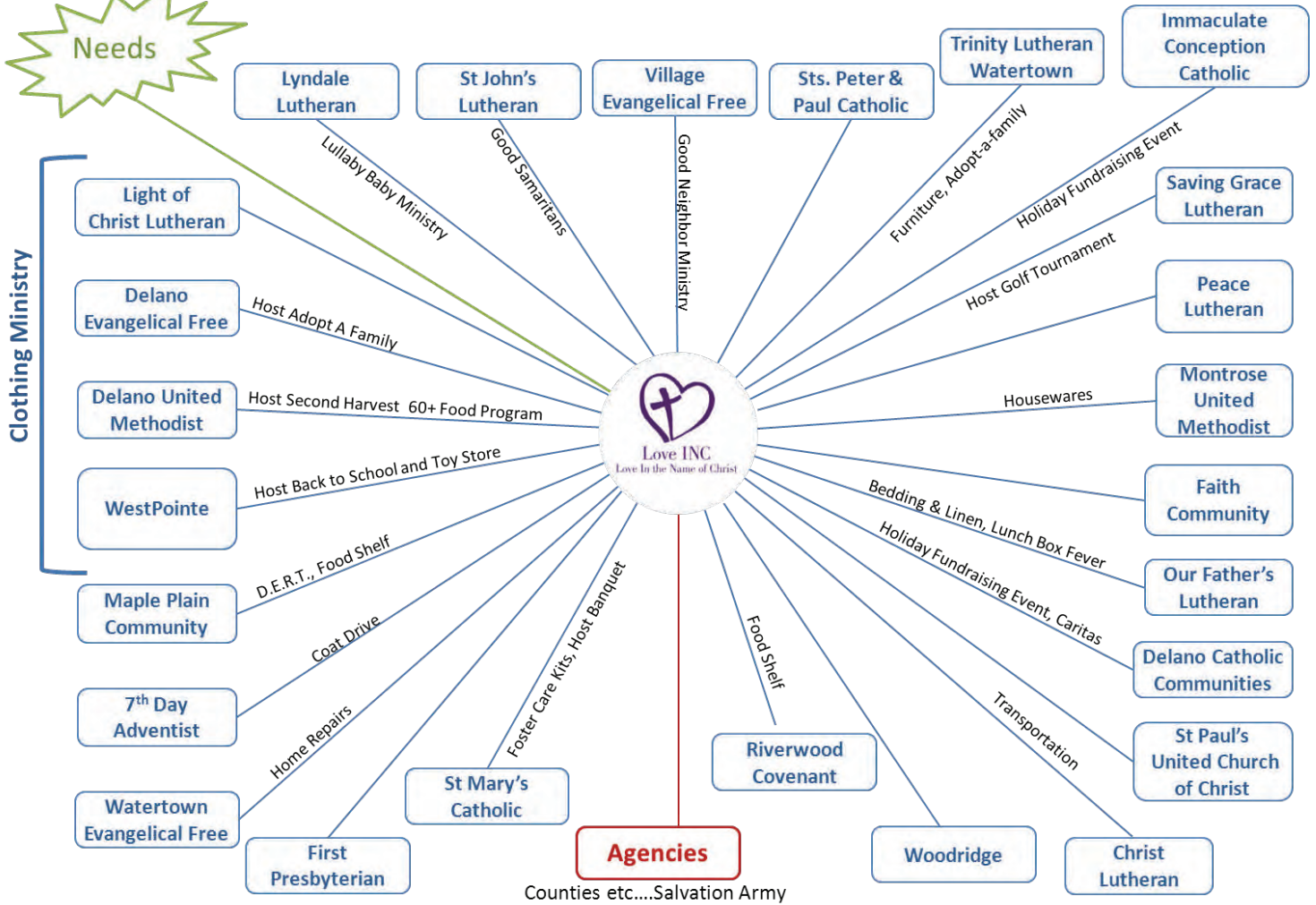
Join in, sharing Christ's love!

Love INC is the vehicle for endless blessings and day-to-day miracles. You can be part of the experience! Here are new opportunities. **One is perfect for you.**

- Volunteer with advance preparation, setup or cleanup at the **April 22 gala and silent auction** at St. Mary's Parish Center in Waverly.
- Help in the Love INC **office**; phones, data entry, writing thank you notes and more.
- Meet new friends in the **Gift & Thrift Store**, join the clothing ministry; sort, display merchandise, sell or help warehouse.
- Give **rides** to medical appointments or make deliveries.
- Help plan the annual *Love INC Invitational golf tournament* this summer. Register your foursome and/or sponsor a hole!
- Serve with Gap Ministries such as **home repair, transportation and furniture pick up and delivery.**
- Serve on Love INC-Heartland's **board of directors.**
- Join the **fund-raising team.**
- Promote Love INC-Heartland and its events and needs within **your own congregation.**

Call the Love INC office at 763-972-6547
and get involved in the fun!

Affiliate Ministries



The Gift & Thrift Store is just the beginning! See more **Ministries In Action** on page 5.

Ministries In Action



ADOPT-A-FAMILY brought joy to 131 families representing 440 individuals



The free **TOY STORE** guaranteed gifts for 112 families that included 293 children.



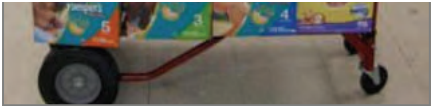
FURNITURE MINISTRY filled 143 requests including 106 beds. **BEDDING/LINENS MINISTRY** supplied for all these beds plus 53 requests. **HOUSEWARES MINISTRY** provided home merchandise to fill 43 requests



BACK-TO-SCHOOL BASH served 109 families with 257 children



LULLABY MINISTRY filled requests for 131 babies, providing 169 packages of diapers with wipes and ten cribs



THANKSGIVING BASKETS served 277 individuals in 105 families



Love INC-Heartland

grows into Relational Minis-

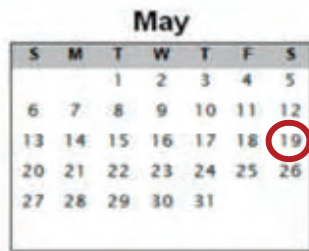
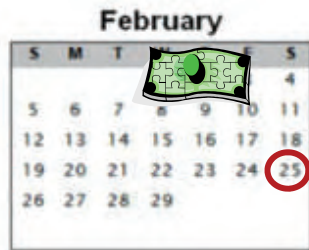
Love INC-Heartland's future vision has always been a move into **Relational Ministry** — a kind of assistance that goes beyond short-term help.

Through Relational Ministry, neighbors in need are partnered with Christian advisors who help with the learning of life skills needed to move out of crisis and into stability. Love INC's new Relational Ministry facilitators and advisors help families improve budgeting, planning, and parenting skills. Topics will expand as participants successfully complete sessions.

Thank you! to the facilitators and advisors who make a personal investment in each family, to St. Peter's Catholic (Delano) for providing meeting space, to volunteers who donate food and time for the children, and to Love INC board members who developed the program.



2012 Key Dates



- 2/2 Relational Ministry kickoff
- 4/22 Spring Gala at St Mary's Catholic, Waverly
- 6/15 Food for Friends Giveaway
- 7/4 Delano Independence Day parade float
- 7/13 Food for Friends Giveaway
- 8/9 Golf Tournament at Wild Marsh, Buffalo
- 8/13 Food for Friends Giveaway
- 8/22 Back to School Bash at WestPointe Church, Delano
- 10/1 Thanksgiving Baskets and Adopt-A-Family kick off
- 10/13 SleepOut fund raiser
- 10/13 Food for Friends Giveaway
- 11/16 Give to the Max Day
- 12/1 Old Fashioned Christmas in Delano
- 12/15 Toy Store

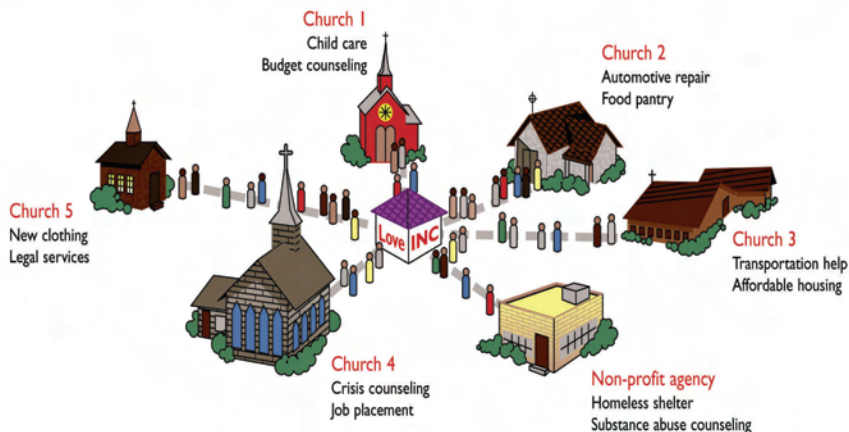
○ Board of Directors meetings at 8 a.m. (Call office for host church location.)

Partner Churches

Christ Lutheran Church,
Maple Plain
Delano Catholic Communities
Delano Evangelical Free Church
Delano United Methodist
Faith Community, Independence
First Presbyterian, Howard Lake
Immaculate Conception, Watertown
Light of Christ Lutheran, Delano
Lyndale Lutheran Church,
Maple Plain
Maple Plain Community Church
Montrose United Methodist
Our Father's Lutheran, Rockford
Peace Lutheran, Watertown
Riverwood Covenant, Rockford
Saving Grace Lutheran, Delano
St. John's Lutheran, Howard Lake
St. Mary's Catholic, Waverly
St. Paul's UCC, Delano
Sts. Peter and Paul Catholic,
Loretto
Seventh Day Adventist, Maple Plain
Trinity Lutheran, Watertown
Village Evangelical Free,
Independence
Watertown Evangelical Free
WestPointe Church, Delano
Woodridge Church, Delano

The Love INC Model

Love INC brings resources together so more needs can be met.



As you leave the annual meeting and ponder the stories you heard, we especially want you to remember how Love INC-Heartland ministers to neighbors in need.

Our staff: ***Listen compassionately***
Share intentional prayer
Validate every need
Directly link neighbors to responding churches

We invite you to join us in experiencing God's blessings every day. Call 763-972-6547 for more information and to get involved.



- I want to help with a monthly pledge of \$_____ or a one-time gift of \$_____
- I will make a secure online donation at www.LoveINCHeartland.org
- Please send me information about volunteering in the Love INC Heartland office.

Mail to:

Love INC-Heartland
P.O. Box 143
Delano, MN 55328

Tel. 763-972-6547
Fax 763-972-6548
help@loveincheartland.org
www.loveincheartland.org

Name _____

Address _____

City _____

State _____ Zip _____

Home Phone (_____) _____

Work Phone (_____) _____

E-mail _____

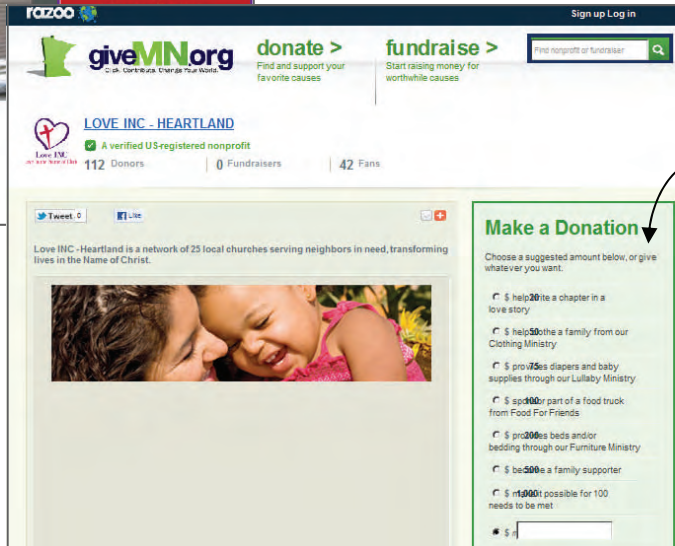
Church Affiliation _____

Donating online is EASY!!

1 www.loveinheartland.org

Meeting each
need costs
\$12.13

2011: 13,120
needs met!



Love INC-Heartland partners with **razoo** to ensure secure online donations.

Please consider setting up a monthly donation that transfers automatically from your bank account or credit card.



Love INC-Heartland
P.O. Box 143
Delano MN 55328

www.loveinheartland.org